

**AREA: ADDINGHAM**

<b>Site count</b>	<b>Capacity Overview</b>	<b>Headline Analysis</b>	<b>Detailed Tables</b>
-------------------	--------------------------	--------------------------	------------------------

<b>ALL SITES</b>		<b>SITES WITHIN TRAJECTORY (DELIVERABLE OR DEVELOPABLE)</b>	
Total No Of Sites	17	No of Green Field Sites	14
Total Area (Ha)	43.10	No Of PDL Sites	0
RUDP Phase 1 Housing Sites	1	Mixed PDL / Green Field	1
RUDP Phase 2 Housing Sites		Wholly / mainly within flood zone 1	
Sites with Outline / Full pp for Housing		Wholly / mainly within flood zone 2	
Suitable Now		Wholly / mainly within flood zone 3a	
Potentially Suitable (Policy Constraints)	16	Wholly / mainly within flood zone 3b	1
Potentially Suitable (Physical Constraints)		Within / partly within green belt	8
Unsuitable	1	Within / partly within local wildlife designations	
		Within partly within local green space designations	4

<b>DWELLING CAPACITY (Based on Median of Upper and Lower)</b>							
	No Of Sites	Hectares	Short	Medium	Long	Total	% of District Total
	15	35.47	84	760	165	1009	2.6%

**HEADLINES / MAIN POINTS**

The size and rural nature of the settlement provides limited opportunity in the recycling of land to residential from other uses other than on very small sites. One small housing allocation remains in the settlement carried forward from the RUDP and there is an additional unallocated site that would be available in the short term subject to other constraints being overcome. A large amount of land has been submitted for consideration in Addingham most of which falls in either the currently defined greenbelt or on land protected as other green space designations in the RUDP.

Those sites to the south and western edge of the settlement are generally less constrained than those to the north and east side of the settlement but cannot come forward before the middle period of the trajectory given policy constraints.

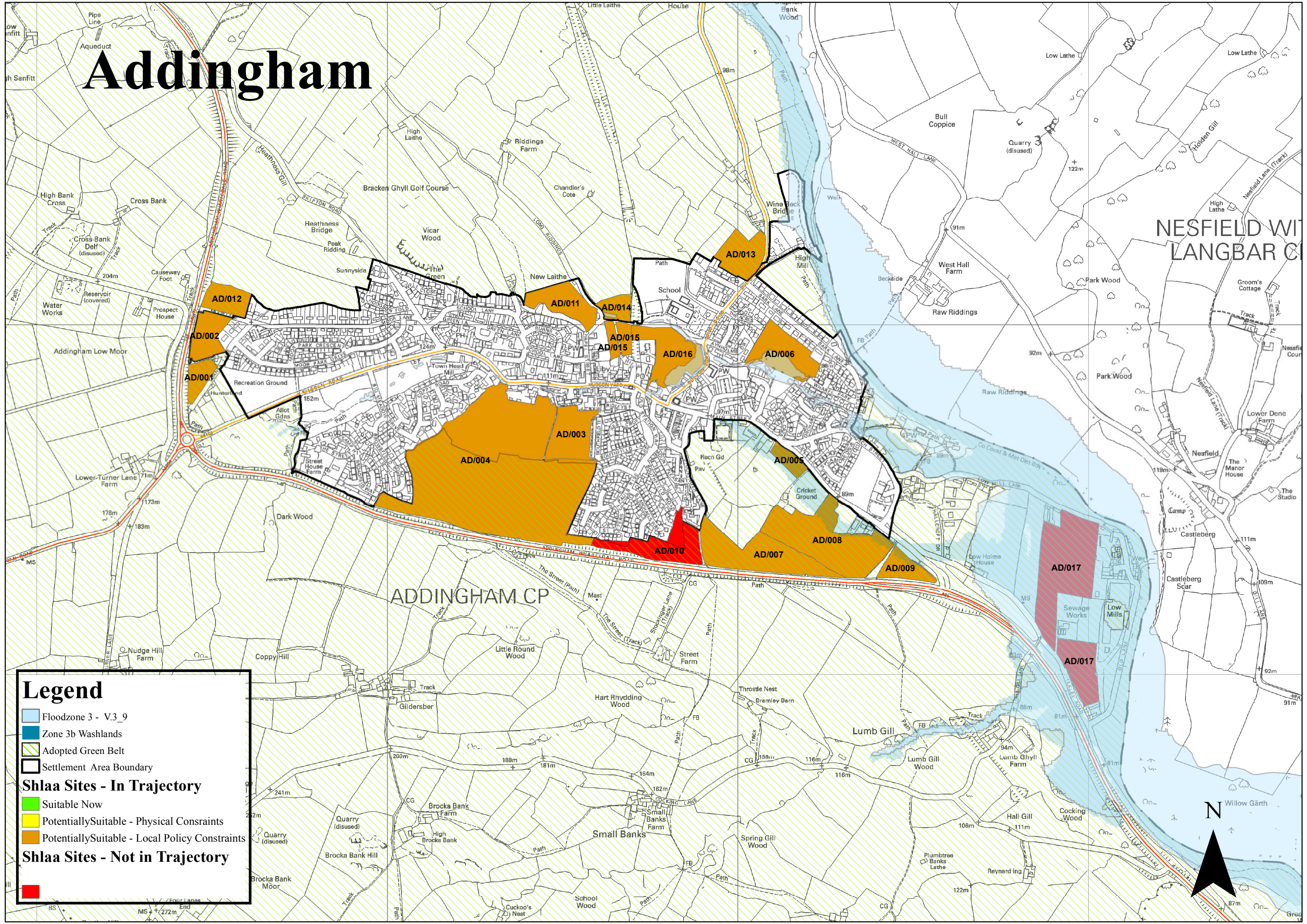
	‘Deliverable Sites’			‘Developable Sites’								
	SHORT TERM Years 1-6			MEDIUM TERM Years 7-12			LONG TERM Years 13-17			TOTAL		
	Lower Forecast	Upper Forecast	Mid Point	Lower Forecast	Upper Forecast	Mid Point	Lower Forecast	Upper Forecast	Mid Point	Lower Forecast	Upper Forecast	Mid Point
<b>Addingham Trajectory Total</b>	78	90	84	679	841	760	130	200	165	887	1131	1009
<b>Green Field</b>	40	40	40	679	841	760	130	200	165	849	1081	965
<b>Mixed</b>	38	50	44							38	50	44
<b>PDL</b>												
<b>PDL Consolidated*</b>	19	25	22							19	25	22
<b>PDL %</b>	24.3	27.7	26.2							2.1	2.2	2.2
<b>Addingham Residual</b>										1	53	27
<b>Residual – GF</b>										1	53	27
<b>Residual – Mixed</b>												
<b>Residual PDL</b>												
<b>Addingham Capacity Total</b>										888	1184	1036

	No of Sites	Hectares	Dwellings
<b>Suitable Now</b>			
<b>Potentially Suitable – Policy Constraints</b>	15	35.47	1009
<b>Potentially Suitable – Physical Constraints</b>			
<b>Unsuitable Sites</b>	1	5.72	

		SHORT TERM			MEDIUM TERM			LONG TERM			TOTAL		
		Lower Forecast	Upper Forecast	Mid Point	Lower Forecast	Upper Forecast	Mid Point	Lower Forecast	Upper Forecast	Mid Point	Lower Forecast	Upper Forecast	Mid Point
<b>Addingham Trajectory Total</b>		78	90	84	679	841	760	130	200	165	887	1131	1009
	<b>Suitable Now</b>												
	<b>Potentially Suitable (Policy Constraints)</b>	78	90	84	679	841	760	130	200	165	887	1131	1009
	<b>Green Belt</b>				531	630	581	130	200	165	661	830	746
	<b>Other</b>	78	90	81	148	211	179				226	301	263
	<b>Potentially Suitable (Physical Constraints)</b>												
<b>Residual Supply*</b>													
<b>Addingham Residual Supply Total</b>											1	53	27
	<b>Potentially Suitable (Policy Constraints)</b>										1	53	27
	<b>Green Belt</b>										1	53	27
	<b>Other</b>												
	<b>Potentially Suitable (Physical Constraints)</b>												
<b>Addingham Capacity Total</b>											888	1184	1036



# Addingham



**Legend**

- Floodzone 3 - V.3\_9
- Zone 3b Washlands
- Adopted Green Belt
- Settlement Area Boundary
- Shlaa Sites - In Trajectory**
  - Suitable Now
  - Potentially Suitable - Physical Constraints
  - Potentially Suitable - Local Policy Constraints
- Shlaa Sites - Not in Trajectory**

